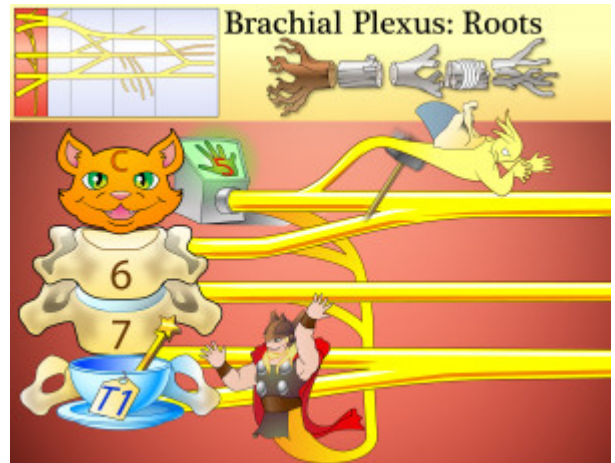


Brachial Plexus Roots

Spinal nerves C5 through T1 form the roots of the brachial plexus.



PLAY PICMONIC

C5 through T1

[Cat \(5\) Hand vertebrae through Tea \(1\) Wand vertebrae](#)

C5, C6, C7, C8 and T1 are the spinal nerves that form the roots of the brachial plexus. More specifically, it is the ventral/anterior primary rami of C5-T1 that form the roots.

Long Thoracic Nerve

[Long Thor Nerve](#)

This nerve originates from the brachial plexus roots (C5-C7) and innervates the serratus anterior muscle. Damage to this nerve may lead to the classic winged scapula, where the scapula has a wing-like resemblance due to the medial border of the scapula sticking out against the posterior thoracic wall.

Dorsal Scapular Nerve

[Dorsal-fin Scapula Nerve](#)

This nerve originates from the brachial plexus roots (C5) and innervates the levator scapulae, rhomboid major and rhomboid minor.