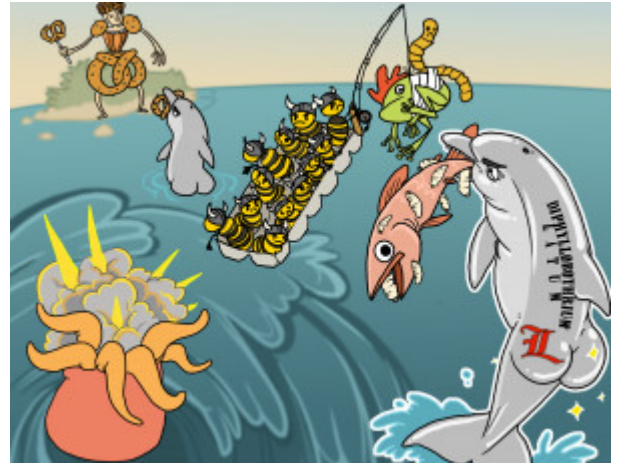


## Diphyllobothrium Latum

*Diphyllobothrium latum* is a parasitic infection classified as a tapeworm, or cestode. It occurs through the ingestion of larvae from raw freshwater fish, and leads to macrocytic anemia in patients. This occurs because this tapeworm competes for B12 with the host in the intestines. The preferred treatment for *diphyllobothrium latum* infection is praziquantel.



PLAY PICMONIC

### Pathophysiology

#### Cestode (Tapeworm)

##### [Crest-toad with Tapeworm](#)

*Diphyllobothrium latum* is a cestode, or tapeworm.

#### Ingestion of Larvae from Raw Fish

##### [Raw Fish](#)

Patients become infected with *diphyllobothrium* after ingesting larvae from raw fish.

#### Competes for Vitamin B12

##### [Competing with \(12\) Dozen Viking \(B\) Bees](#)

Roughly 80% of patients infected are asymptomatic and can go for years without having their infection detected. The parasite then absorbs up to 80% or more of the host's B12 intake, which leads to megaloblastic anemia.

#### Megaloblastic Anemia

##### [Mega-blast Anemone](#)

The B12 deficiency in patients can lead to megaloblastic anemia, which is indistinguishable from pernicious anemia. This megaloblastic anemia can also translate into subtle demyelinating neurological symptoms.

### Treatment

#### Praziquantel

##### [Pretzel-queen](#)

The standard treatment for this infection is praziquantel, but it should be noted that this treatment regimen is not FDA-approved.