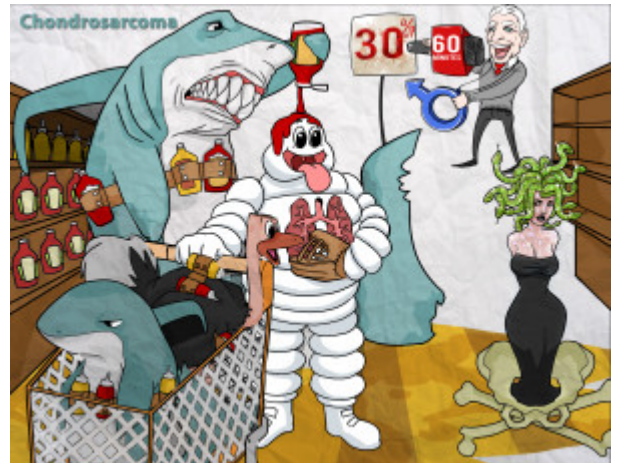


## Chondrosarcoma

Chondrosarcoma is a malignant tumor of the cartilage which presents in the proximal skeleton typically in men 30-60 years old. The classic description of the appearance is a glistening mass in the medullary cavity. These tumors can be primary or transform from benign osteochondromas.



PLAY PICMONIC

### Pathophysiology

#### Cartilaginous tumor

[Cartilage-cart](#)

Chondrosarcoma is a malignant tumor of the cartilage.

#### Malignant

[Malignant-man](#)

The tumor is malignant with a tendency to metastasize to the lungs.

#### Men 30-60 years old

[\(30\) Dirty sale-sign and \(60\) Minute-reporter with Male Sex-symbol](#)

The tumor commonly presents in men 30-60 years old.

#### Pelvic and femur bones

[Pelvic and Femur Bones](#)

The femur is a bone of the proximal skeleton that the tumor commonly affects. Pelvic bones and other proximal skeletal bones are the classic area for tumor presentation.

### Signs & Symptoms

#### Glistening mass in medullary cavity

[Glistening Medullary-medusa](#)

The tumor's appearance and growth pattern is typically described as a glistening mass in the medullary cavity and can help with tumor identification.

#### Can be primary in origin or from osteochondroma

[Baby Condiment-shark-comb and Ostrich-condiment](#)

The tumor can be primary in origin or can transform from an osteochondroma, which is a benign primary bone growth.

#### Metastasize to lungs

[Mitt on Lungs](#)

Chondrosarcomas commonly metastasize to the lungs due to its malignant potential.